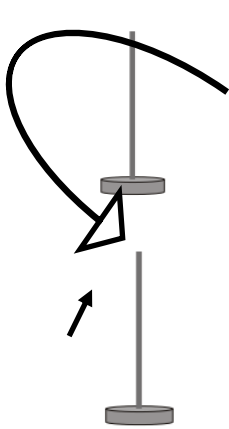


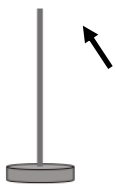
# 3° Tappa MDL GIMKANA - Marche 2021

6 giugno 2021 Sant'Andrea Country Horse Resort— Forlimpopoli

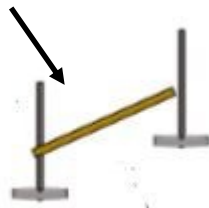
## Percorso Cat. AMATORI



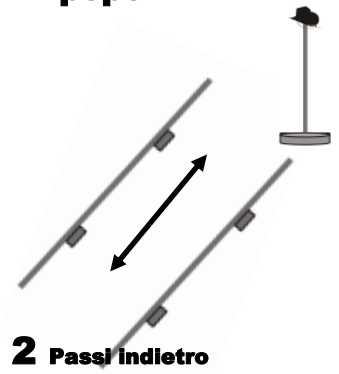
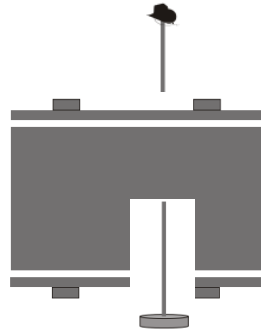
**1**  
SLALOM



**5** Salto

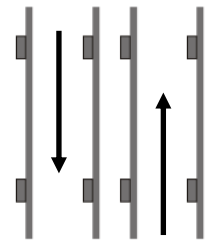


**3/4**  
Ponte con trasferimento  
oggetto



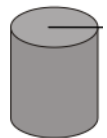
**2** Passi indietro

**10** corridoio

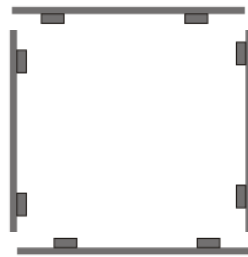


**9** corridoio

**8** otto tra barilli libero

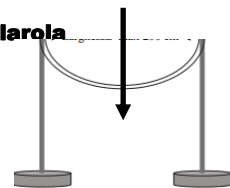


**11**  
Passo laterale  
libero



**7** Quadrato

**6** scalarola



Partenza

Arrivo

**Dimensioni Campo gara 30X50**